



# pivCLASS Mobile Validation Software

**KEY BENEFITS:**

**pivCLASS Mobile Validator**

- Normal operation features intuitive, 100% hands-free GUI
- Works in contact and contactless mode
- Works with many ruggedized mobile devices
- CRL and TWIC CCL checking
- Network-based functionality and database synchronization (photos, names, PACS card numbers, access rights, TWIC privacy keys)
- Know that a cardholder is allowed into a particular area at any given time
- Audit trail exporting to a database server (in real-time or batch mode)

**pivCLASS Mobile Registration Engine**

- Able to switch from authentication/verification mode to registration mode instantly
- Adds pivCLASS Registration Engine functionality to pivCLASS Mobile, authenticating and validating FIPS 201 credentials, harvesting the data, and provisioning a credential into the PACS..
- Works with over 30 Physical Access Control systems.

**pivCLASS Data Import**

- Extract data from your Physical Access Control System credential database onto a mobile device - photo, name, card number, access rights

**pivCLASS Mobile Drivers' License Option**

- Reads US drivers' licenses
- Displays name, license number, expiration date
- Creates audit log record
- Access information via bar code scanner or mag stripe reader

## MOBILE VALIDATION FOR VERIFICATION OF FIPS 201 CREDENTIALS AND OTHER CARDS

pivCLASS mobile validation software verifies PIV, PIV-I, TWIC, FRAC, CAC, CIV, Prox, and DESFire credentials using a mobile handheld reader's contact or contactless interface. HID offers two pivCLASS Mobile products: pivCLASS Mobile Validator and pivCLASS Mobile Registration Engine; both designed to provide hands-free validation of all types of FIPS 201 cards. The card's authenticity is verified using one, two or three factor authentication to ensure that the card is genuine and has not been tampered, copied, cloned, lost, stolen or shared. Verification is achieved through a combination of signature checks, cryptographic private key challenge, PIN and fingerprint checks. It also checks that the certificates on the card have not been revoked by the credential issuer using the issuers, Certificate Revocation List (CRL) or the TWIC Canceled Card List (CCL).

When configured in one of the four TWIC authentication modes, it functions as a TSA ICE-listed mobile TWIC reader. When operating in "Non-TWIC" mode, the pivCLASS mobile validation software determines the card type and applies appropriate validation rules for that card type's data model and the interface mode (contact or contactless).

pivCLASS Mobile Validator provides network-based functionality between the mobile handheld and the pivCLASS database, including:

- Database synchronization between pivCLASS database and mobile handheld supporting the downloading of photos, names, access rights and TWIC privacy keys

- Audit trail exporting to a database server (in real-time or batch mode)
- Downloading server-based configuration policies

pivCLASS Mobile Registration Engine adds additional functionality to:

- Register cardholder information into the PACS head-end
- Assign access rights
- Allow existing proximity or DESFire card to be linked to the FIPS 201 credential

The pivCLASS Data Import module can be added to synchronize the pivCLASS and PACS head-end databases. When a change is detected in the PACS database Data Import updates the pivCLASS database and pushes this data to the mobile handhelds during the next mobile device data synchronization. It can be used to extract credentials, access rights and user-defined cardholder information from the PACS database so that these data are available to the pivCLASS mobile handhelds when a card is presented. Allows an operator to verify that a card is registered in the PACS and has appropriate access rights. Ideal for use with proximity, DESFire and FIPS 201 cards.

## pivCLASS MOBILE VALIDATION PROCESS



### CONTACTLESS

The reader switches to the contactless state whenever it is idle and a new card is presented to the outside of the unit as shown in the graphic to the left.



### CONTACT

The reader switches to the contact state under the following two conditions:

- The operator explicitly clicks this image.
- The operator inserts a smart card into the contact reader.



### BIOMETRIC SCAN

TWIC Mode

- The reader is in TWIC Authentication Mode 3 or 4 and is prompting the cardholder to place his finger on the sensor.

Non-TWIC Mode:

- The reader is in Non-TWIC Authentication Mode and is prompting the cardholder to place his finger on the sensor.



### NOT AUTHENTICATED

This is the result of one of the following conditions:

- Card read error
- Expired smart card
- Invalid CHUID signature
- Invalid (possible forged or cloned) card
- Invalid PIN
- Biometric mismatch
- Failed PKI check(s)
- FASC-N is on the TWIC CCL
- Operator cancels the verification



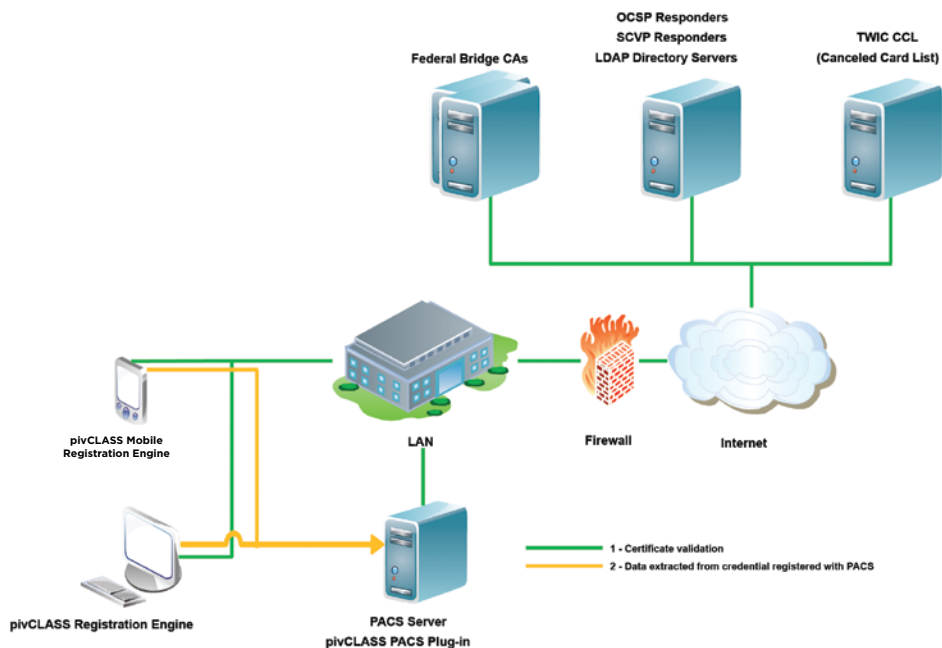
### AUTHENTICATED

The card was determined to be valid using the methods supported for the given smart card. The following is known:

- CHUID is valid
- PIN Verification (Only for cards which are PIN protected, and the card is inserted in the contact interface)
- Smart card is not expired
- Smart card is not forged or cloned
- Cardholder is linked to the smart card
- Smart card has not been revoked

## SPECIFICATIONS

<b>Models</b>	pivCLASS Mobile Validator pivCLASS Mobile Registration Engine pivCLASS Data Import pivCLASS Drivers' License Option
<b>Random Access Memory</b>	Minimum of 32 MB RAM. Recommended 128 MB RAM or greater
<b>Persistent Memory</b>	Minimum of 256 MB Internal CF
<b>Monitor</b>	Color digital transfective touch screen with stylus
<b>Supported Dimensions</b>	240 horizontal x 320 vertical (portrait) 320 horizontal x 240 vertical (landscape) 640 horizontal x 480 vertical (landscape)
<b>Fingerprint Sensor</b>	Must be FIPS 201 Approved Product List (APL) certified
<b>Biometric Matching Algorithm</b>	Must be FIPS 201 Approved Product List (APL) certified
<b>Smart Card Interface</b>	Contact interface - Must be FIPS 201 Approved Product List (APL) certified. Contactless interface - Must be FIPS 201 Approved Product List (APL) certified.
<b>Wireless Protocol</b>	WiFi 802.11b/g
<b>Supported Mobile Devices</b>	Datastrip DSV-2+ Turbo
<b>Supported OS*</b>	Windows CE 5.0, Windows Mobile 6
<b>Biometric Matching Algorithm</b>	Must be FIPS 201 Approved Product List (APL) certified



hidglobal.com

North America: +1 512 776 9000  
Toll Free: 1 800 237 7769  
Europe, Middle East, Africa: +44 1440 714 850  
Asia Pacific: +852 3160 9800  
Latin America: +52 55 5081 1650

© 2014 HID Global Corporation/ASSA ABLOY AB. All rights reserved. HID, HID Global, the HID Blue Brick logo, the Chain Design, and pivCLASS are trademarks or registered trademarks of HID Global or its licensor(s)/supplier(s) in the US and other countries and may not be used without permission. All other trademarks, service marks, and product or service names are trademarks or registered trademarks of their respective owners.

2014-12-10-pivclass-mobile-validation-ds-en PLT-01755

An ASSA ABLOY Group brand



ASSA ABLOY