

1. Overview

Thank you for purchasing PLANET 150-watt AC power supply.

Power Supply Unit	Input Range
XGS-PWR150-AC	100 to 240V AC

Open the box of the Redundant Power Supply unit and carefully unpack it. The box should contain the following items:

- The AC Power Supply unit x 1
- User's Manual x 1

If any item is found missing or damaged, please contact your local reseller for replacement.

- 1 -

3. Installing Redundant Power Supply Unit



Note

The XGS-PWR150-AC is hot-swappable, so there is no need to power off the switch before removing it from the switch.

Follow these steps to install the redundant power in the switch:

1. Place the switch on a flat surface. Use a screwdriver to unscrew screws on both sides of the blank plate to remove the blank plate. Do not discard the blank plate as it can be used again when removing the power supply unit from the switch.

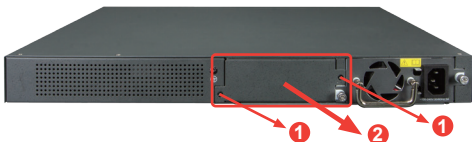


Figure 3-1 Removing the Blank Plate

- 3 -

2. Introduction

Before installation, please be sure to read this user's manual carefully to successfully complete the correct installation of the XGS-PWR150-AC 150-watt AC Power Supply Unit. This manual shows how to quickly install the power in the XGS-6350-24X4C Switch.

The following figure shows the front panel of the XGS-PWR150-AC.

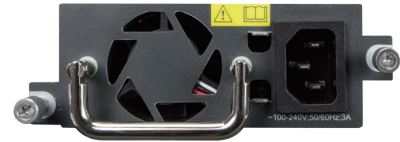


Figure 2-1 XGS-PWR150-AC Front View

- 2 -

2. Install the redundant power by sliding it into the compartment.



Figure 3-2 Sliding the Power Supply Unit into the Compartment

3. Next, tighten the thumbscrews on both sides.



Figure 3-3 Tightening the Thumbscrews.

- 4 -

www.PLANET.com.tw

150-watt AC Power Supply for XGS-6350-24X4C Switch

▶ XGS-PWR150-AC



PLANET Technology Corp.

10F., No. 96, Minquan Rd., Xindian Dist., New Taipei City 231, Taiwan

Warning:
This is a class A product. In a domestic environment this product may cause radio interference in which case the user may be required to take adequate measures.

2351-A98080-000



4. Removing Redundant Power Supply Unit

Follow these steps to remove the redundant power from the switch:

1. Remove AC power cord from the XGS-PWR150-AC.
2. To remove the redundant power from the XGS-6350-24X4C, loosen the thumbscrews on both sides and pull it out.

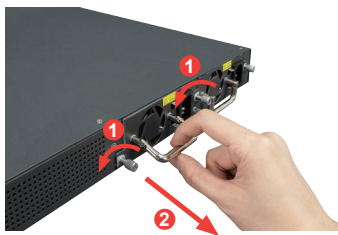


Figure 4-1 Removing the XGS-PWR150-AC