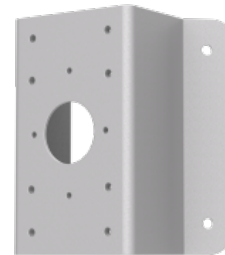


TVP-WM-CM

TruVision PTZ dome corner mount adapter

Overview

The TVP-WM-CM allows for a more efficient installation for corner mount PTZ installations. Such a corner mount installation allows a single PTZ camera to cover a wider field of view compared to a standard wall mount bracket. The TVP-WM-CM can be combined with the TVP-WMB or GEA-102 TruVision PTZ brackets.



Standardprestanda

- TruVision PTZ corner mount adapter
- Compatible with TVP-WMB and GEA-102
- Fits 90° corners

TVP-WM-CM

TruVision PTZ dome corner mount adapter

Tekniska data

General

Bracket type	Camera
Bracket mounting part	Mounting adapter
Camera support type	TruVision bracket
Mount type	Corner mount

Physical

Physical dimensions	194 × 176 × 109 mm 7.63 × 6.93 × 4.29 in.
Net weight	1548 g 3.41 lbs.

Supported brackets

Wall mount brackets	TVP-WMB, GEA-102
---------------------	------------------

Order data

Artikelnummer	Beskrivning
TVP-WM-CM	TruVision PTZ dome corner mount adapter

