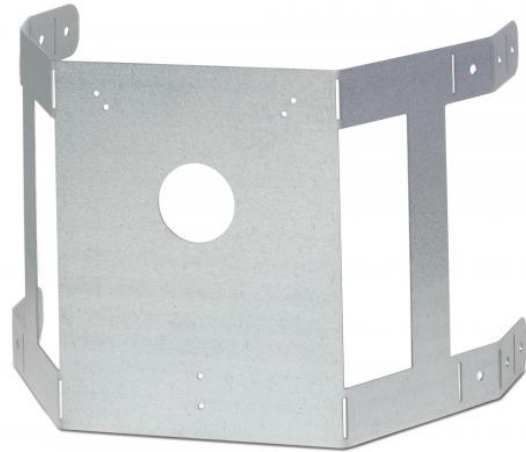


FDD710MB

Mounting Bracket For FDD710, Irregular Duct Shapes

The FDD710MB allows the FDD710 duct detector to be mounted on irregular shaped or circular ducts. Four tabs are easily bent to adapt to the shape of the duct. The FDD710 then mounts on the flat surface.



Standard Features

- Four tabs adapt to the shape of the duct

FDD710MB

Mounting Bracket For FDD710, Irregular Duct Shapes

Specifications

Environmental

Environment

Indoor

Ordering Information

| Part No. | Description |
|----------|--|
| FDD710MB | Mounting Bracket For FDD710, Irregular Duct Shapes |