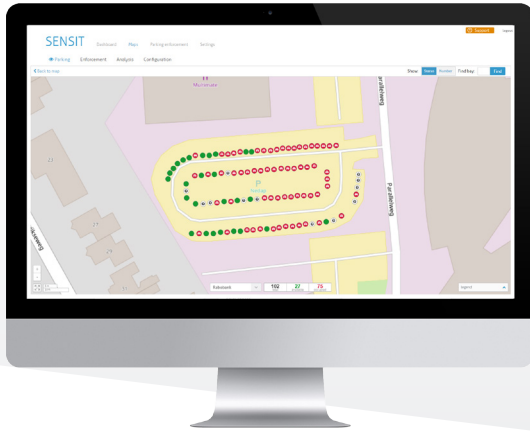


SENSIT INTERFACE SOFTWARE

| software for configuration, administration and integration



KEY FEATURES:

- Installation, configuration and basic administration of wireless SENSIT network
- API provides seamless integration into any parking/traffic guidance or enforcement system
- Data processing from sensors
- Transmits messages in the required format to an embedded database or software application

The SENSIT Interface Software (SIS) collects, filters and evaluates all data generated by the SENSIT parking sensor network. This cloud software provides a user-friendly overview of the entire SENSIT system and enables easy network segmentation, calibration and sensor configuration.

Easy installation and configuration

The SENSIT Interface Software enables easy installation of the wireless SENSIT network. Once the SENSIT parking sensors, Gateways and Relay Nodes are installed and calibrated, these components will automatically appear in the software.

Using the software's detailed map monitor, the status and configuration of sensors and other network components like gateways, relay nodes and displays can be easily viewed and adjusted. Settings concerning the detection technology (infrared or magnetic detection) can be configured per individual parking sensor. Furthermore, using the drag and drop function, individual sensors and network components can be positioned on the map.

Easy integration with SIS API

The SENSIT Interface Software is cloud based. Using the REST interface, parking data can be easily integrated to any parking guidance system, parking enforcement software and smartphone apps. The SIS forms the basis for additional services and functions such as data analysis, planning and management of e.g. e-loading, truck and disabled parking bays.

Monitoring wireless sensor network

Additionally, the software configures and monitors the communication of the SENSIT node network. It monitors the data transfer between the sensors and the SENSIT Gateway.

It also analyzes the communication reliability of the sensor network in a graphical map monitor, automatically alerting users with areas which need maintenance.

Remote maintenance and support

The SENSIT Interface Software is installed on a hosted server allowing easy remote maintenance and support on any location world-wide.

Overstay configuration

Time restricted parking spaces can be configured by setting the maximum parking duration allowed for these specific parking zones. When the maximum parking duration is exceeded, an overstay event message can be transmitted to a third party enforcement system.

SENSIT Display configuration

The SENSIT Display visualizes the number of available parking spaces in stand-alone parking guidance installations. Advanced configuration settings of the SENSIT Display can be adjusted with the SENSIT Display Option; a separate software feature within the SENSIT Interface Software.

E-Parking Licenses

The parking license tool monitors the legitimate use of parking bays digitally. In the software parking bays can be designated to specific audiences and parking permits can easily be managed. This solution is available in two versions: as a physical onboard SENSIT EPL device and as a SENSIT Parking License app for smartphones.

SPECIFICATIONS

Software functionality	SENSIT Interface Software
Installation and configuration	Calibrate the sensors and analyze calibration process Allocate sensor ID numbers to individual parking bays, parking zones and parking lots Configure all the equipment part of the wireless sensor network
SENSIT sensor configuration	Sensor analysis
Event configuration	Easy selection of required data you want to transmit to the management application Event configuration Event notification (raw sensor data or basic event message) SENSIT event information (event numbering, IR state, magnetic state)
Network	Configure communication gateway settings between the SENSIT Gateway and the SENSIT Interface Software and monitor reliability of the communication network
Occupancy information	Graphical display of the occupancy status of the parking lot
Display configuration	Configure Nedap display as part of the wireless Sensit network <ul style="list-style-type: none">• Set display update intervals• Link display to specific parking zones• Set display viewing for different day/times• View current display view
Overstay configuration	Configure overstay time and set alert event for time limited parking bays
Part nr.	8022020 SENSIT Interface Software 8022003 EPL software management 8027153 SENSIT Display Option
Documentation	SENSIT Interface Software_UserGuide
Document version nr.	4.4